



**Premier
Properties**
Perth

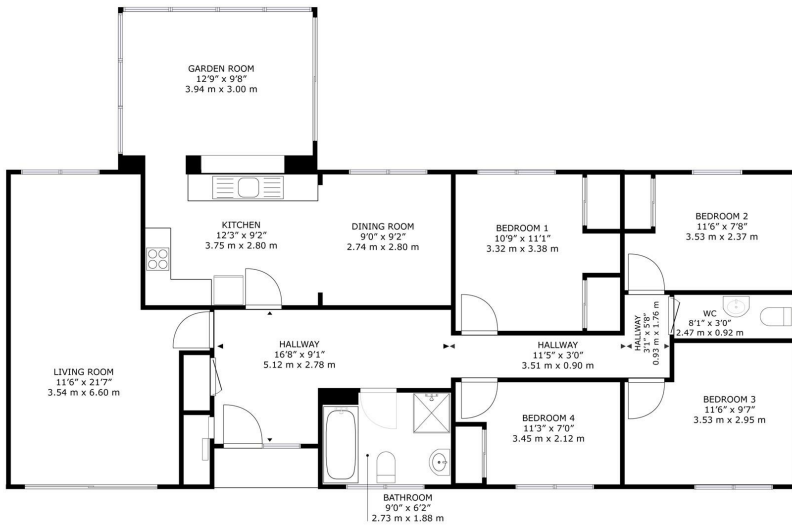


Kintail Tippermallo Road, Perth, PH1 3QL
Offers Over £295,000

 4  1  3  D

- 4 spacious bedrooms
- 3 reception rooms
- Stunning countryside views
- Peaceful area
- Ideal family home
- Ample living space
- Viewing recommended
- Close to local amenities





Kintail, Tippermallo Road Methven, Perth, PH1 3QL

GROSS INTERNAL AREA
TOTAL: 1333 sq.ft, 123.8 m²
SIZES AND DIMENSIONS ARE APPROXIMATE, ACTUAL MAY VARY.



Energy Efficiency Rating		Environmental Impact (CO ₂) Rating	
Very energy efficient - lower running costs	Current	Potential	Very environmentally friendly - lower CO ₂ emissions
(92 plus) A			(92 plus) A
(81-91) B			(81-91) B
(69-80) C			(69-80) C
(55-68) D			(55-68) D
(38-54) E			(38-54) E
(21-38) F			(21-38) F
(1-20) G			(1-20) G
Not energy efficient - higher running costs			Not environmentally friendly - higher CO ₂ emissions
	66	76	64
Scotland	EU Directive 2002/91/EC		Scotland



These particulars, whilst believed to be accurate are set out as a general outline only for guidance and do not constitute any part of an offer or contract. Intending purchasers should not rely on them as statements of representation of fact, but must satisfy themselves by inspection or otherwise as to their accuracy. No person in this firm's employment has the authority to make or give any representation or warranty in respect of the property.